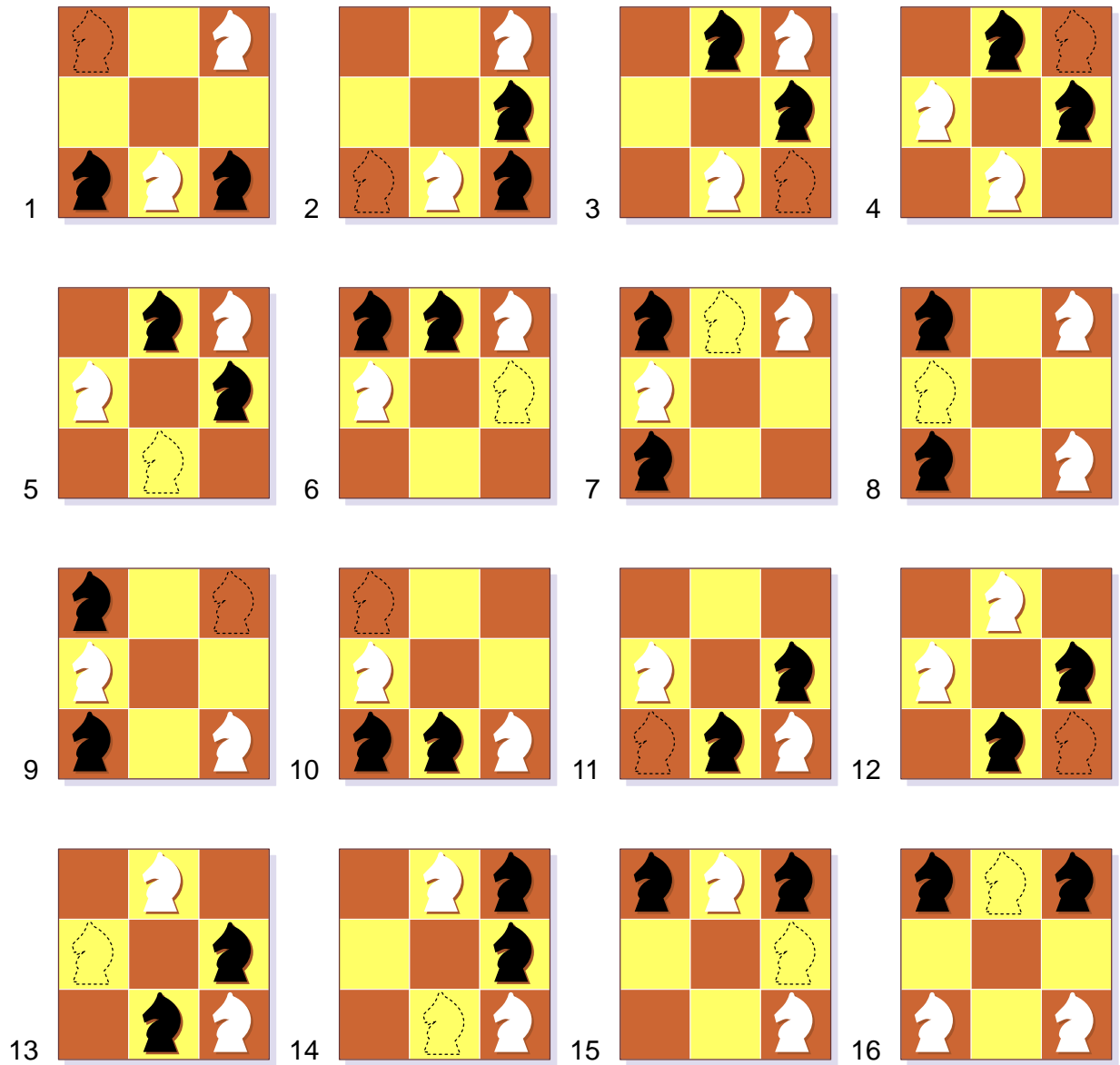


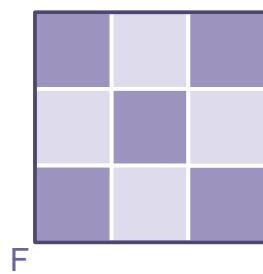
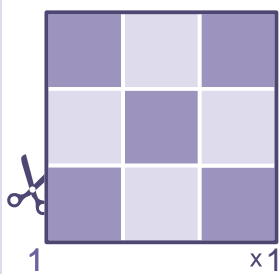
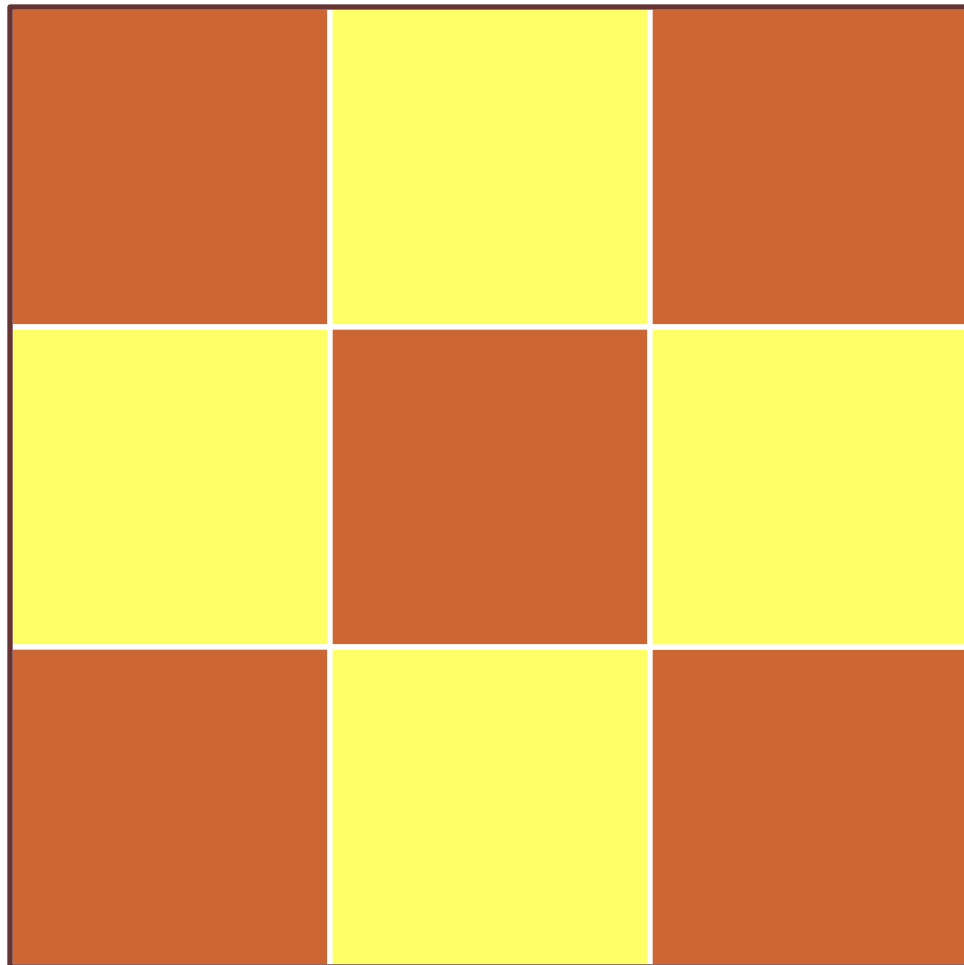
Exchange the black knights with the white knights as shown in the topmost big illustration in the minimum possible number of moves. One move is a normal knight's move on any vacant cell of the board.

The bottom diagram shows some moves of the chess knight which may be done as follows:

- a - one cell in one direction (horizontal or vertical), and then two cells in other direction (vertical or horizontal);
- b - two cells in one direction (horizontal or vertical), and then one cell in other direction (vertical or horizontal).



The minimum possible number of moves for this puzzle is 16. One of many possible solutions is shown in the illustration.



To produce the pieces first print them out. Then follow the diagram shown above - from step 1 to step F (finish).