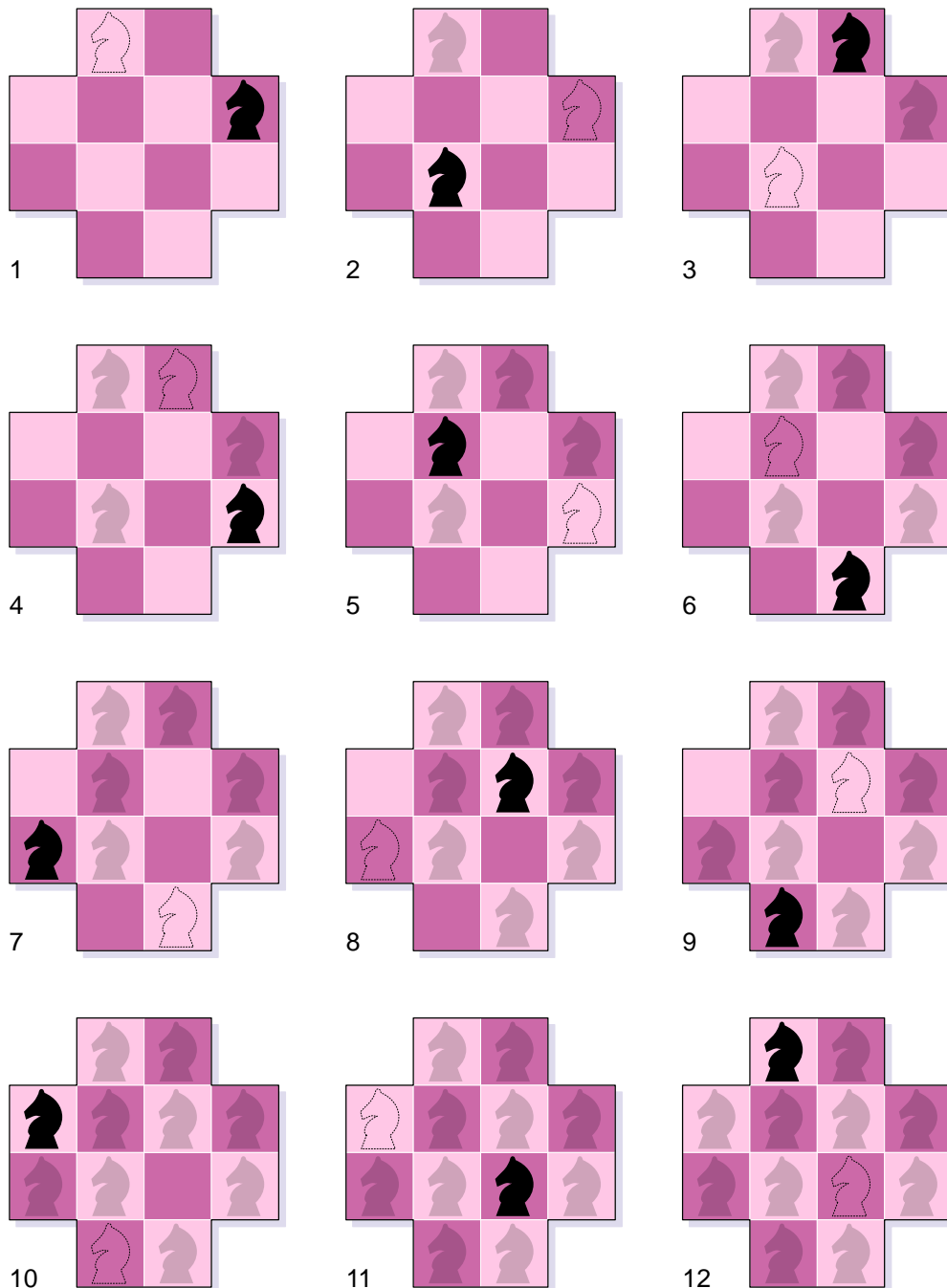


Draw the chess board shown in the topmost illustration or just print it out. Place a chess knight (or a simple coin) in any cell of this board.

The object is to visit with the knight every cell of the board exactly once, and return to the initial cell where your trip began from.

Two bottom diagrams, a and b, show some possible moves of the chess knight which always moves either one cell in one direction, and then two cells in another direction, or vice versa.



The scheme of the solution is shown in the illustration.