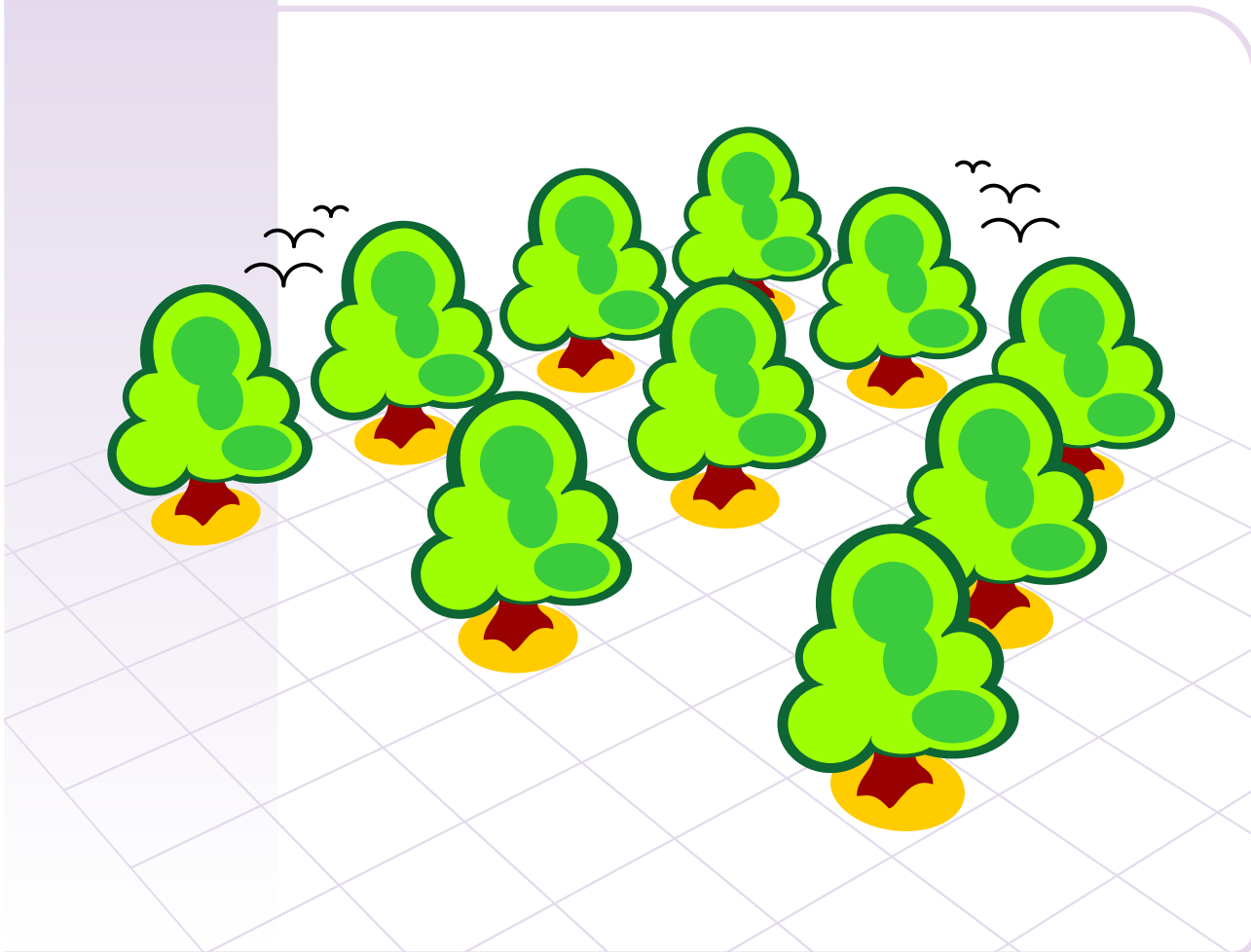


Treasure of Classic
and Modern Puzzles

Pencil 'n' Paper Puzzles



10-in-5-Rows*

Imagine you have ten trees to plant. You have to get an orchard which must consist of five straight rows of trees and each row must contain four trees. One straight line of ten trees cannot be used. Thus the question is: what template could be used for the planting?

*This puzzle was inspired to the publication on our site by messages from Sundaresan.K.R and Dan E.

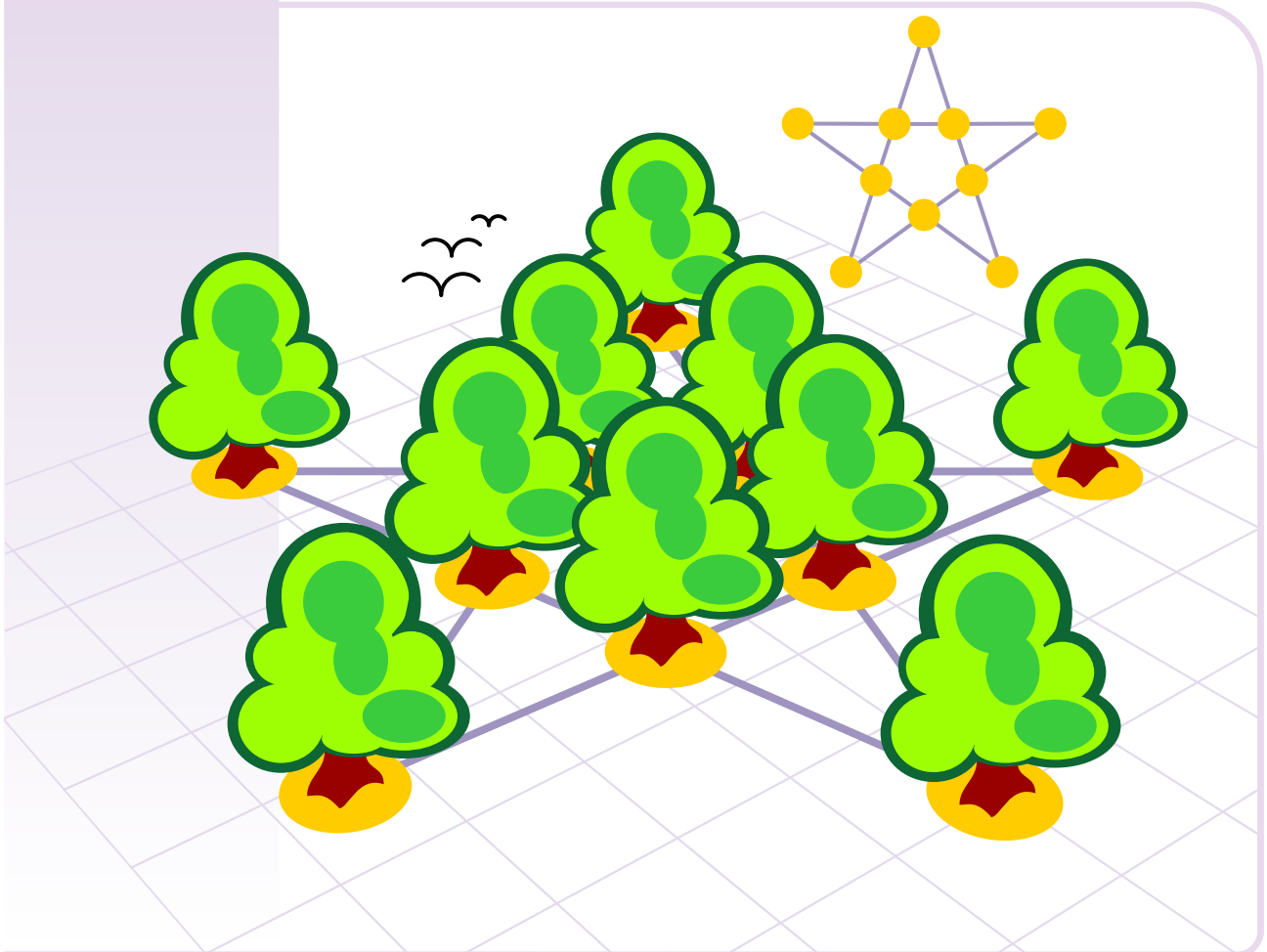
August 28, 2003

www.puzzles.com

Copyright © 2003 ThinkFun Inc. All Rights Reserved. webmaster@ThinkFun.com
Permission is granted for personal use only. This puzzle may not be duplicated for personal profit.

Treasure of Classic
and Modern Puzzles

Pencil 'n' Paper Puzzles



10-in-5-Rows (solution)

One of the solutions to this puzzle is shown in the illustration.

To plant an orchard of five rows of four trees each you could use a five-point star template as shown in the illustration.

This classic puzzle has a long story behind it. Such puzzle grands as Sam Loyd and Henry E. Dudeney contributed to the development of the puzzle.

August 28, 2003

www.puzzles.com

Copyright © 2003 ThinkFun Inc. All Rights Reserved. webmaster@ThinkFun.com
Permission is granted for personal use only. This puzzle may not be duplicated for personal profit.